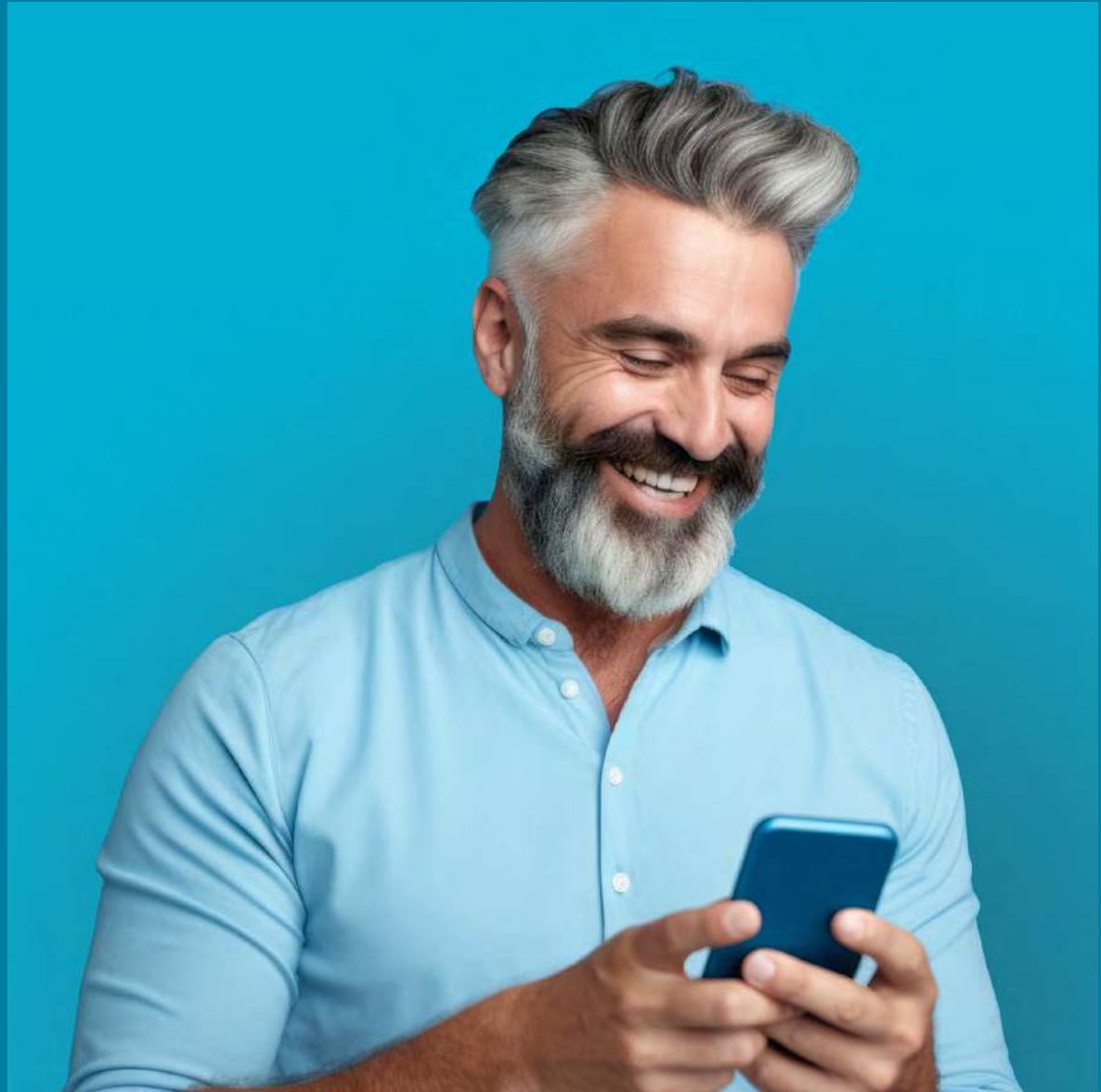


Nice

# Sun Shading Solutions

Automation and management  
systems for awnings, blinds  
and shutters.

2024 Catalogue



Nice

# BiDi-Switch

Miniaturised unidirectional and bidirectional interface to manage lights and electrical loads.

WORKS WITH NICE GATEWAYS:

Yubii<sup>®</sup> Home Pro

Yubii<sup>®</sup> Home

Core

ALSO WORKS WITHOUT A GATEWAY:

Stand Alone

BACKWARD COMPATIBLE:  
ALSO WORKS WITH UNIDIRECTIONAL  
TRANSMITTERS.  
2 INDEPENDENT INPUTS  
AND 2 INDEPENDENT OUTPUTS.



TURN LIGHTS ON/  
OFF



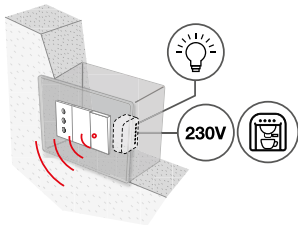
230V LAMP  
MANAGEMENT



230V HOUSEHOLD  
APPLIANCE  
MANAGEMENT



MEASUREMENT  
OF ENERGY  
CONSUMPTION



With BiDi-Switch, you can manage lights and electrical loads by integrating them into your smart home system: it can work without a gateway and with unidirectional transmitters.

With BiDi-Switch you can:

- Control the connected devices in your home individually, in groups or in scenarios.
- Reduce energy waste by controlling consumption and managing electrical loads.
- Check device status.
- Control their functions by creating personalised scenarios, including via the alarm system.
- Use Amazon Alexa, Google Home and Siri Shortcuts voice commands to turn the connected devices on and off.
- Manage the devices remotely via smartphone, smartwatch or car infotainment with the Yubii or MyNice apps.

Packed with benefits and convenience

BiDi-Switch manages all the lights in a room with a single device, without having to replace switches and without the need for smart bulbs.

BiDi-Switch is compact, designed to fit in most recessed boxes; BiDi-Switch can be regulated with a timer to programme auto-off.

Backward compatible

If you replace the TT2L unidirectional control unit with the BiDi-Switch, the transmitter doesn't need not be replaced and the connected devices can be turned on and off even without a gateway.

**Nice Mesh technology:** extension of radio range to 150m (max. 5 Hops) under optimal conditions. Each bidirectional product acts as a radio signal repeater to extend signal coverage.

## TECHNICAL SPECIFICATIONS

Code	Description	Pcs./pack	Certificates
<b>BIDI-SWITCH</b>	Unidirectional and bidirectional interface to manage lights and electrical loads	1	CE

Code	<b>BIDI-SWITCH</b>
Power supply (VAC/Hz)	100–240, 50/60
Rated load current (A)	6.5 A per channel, 10 A combined
Type of load supported	resistive
Radio frequency (Mhz)	433.05–434.04
Max. transmitted power (dBm)	10
Protection class (IP)	20
Operating temperature (°C Min/Max)	0–35
Dimensions (mm)	45 x 36 x 23 h

Nice

# Domì P1

Portable 1 channel bidirectional radio transmitter.



Wall  
bracket



ONE CHANNEL



ERGONOMIC

BiDi

Yubii

433 MHz

**Domì P1 is a single-channel hand-held radio transmitter. It can be used as a single, group or central control.**

Transmission and feedback commands are visualised.

The elegant control is available in the colours **white and black.**

**A wall bracket is included in the delivery scope.**

Code	Description	Quantity	Conformity
<b>DOMIP1</b>	Portable 1 channel bidirectional transmitter white	1	<b>CE</b>
<b>DOMIP1B</b>	Portable 1 channel bidirectional transmitter black	1	<b>CE</b>

**TECHNICAL DATA**

Code	<b>DOMIP1, DOMIP1B</b>
Battery type (V)	2 x AAA
Battery life (years)	~3 (with 10 transmission commands/day)
Radio frequency (MHz)	433.92
Transmitter RF power (ERP)	≤ 10 dBm
Number of groups	1
Radio coding	BD (PLN2+) or mono (O-Code TTS)
Ambient operating temperature (°C)	-5 to 55
Relative humidity	max. 85% (not for wet rooms, non-condensing)
Ingress protection (IP)	40
Weight incl. batteries (g)	75
Dimensions (mm)	155x43x23
Installation (optional)	wall-mounted
Conformity	<b>CE</b>

Nice

# Domì P6

Portable 6 channel bidirectional radio transmitter.



Wall  
bracket



SIX CHANNELS



ERGONOMIC

BiDi

Yubii

433 MHz

**Domì P6 is a 6-channels hand-held radio transmitter. It is able to manage up to 6 groups of automations in single, group or multigroup mode.**

Transmission and feedback commands are visualised.

The elegant control is available in the colours white and black.

**A wall bracket is included in the delivery scope.**

Code	Description	Quantity	Conformity
<b>DOMIP6</b>	Portable 6 channels bidirectional transmitter white	1	<b>CE</b>
<b>DOMIP6B</b>	Portable 6 channels bidirectional transmitter black	1	<b>CE</b>

TECHNICAL DATA

Code	DOMIP6, DOMIP6B
Battery type (V)	2 x AAA
Battery life (years)	~ 3 (with 10 transmission commands/day)
Radio frequency (MHz)	433.92
Transmitter RF power (ERP)	≤ 10 dBm
Number of groups	6
Radio coding	BD (PLN2+) or mono (O-Code TTS)
Ambient operating temperature (°C)	-5 to 55
Relative humidity	max. 85% (not for wet rooms, non-condensing)
Ingress protection (IP)	40
Weight incl. batteries (g)	75
Dimensions (mm)	155x43x23
Installation (optional)	wall-mounted
Conformity	<b>CE</b>

Control systems

For indoor  
blinds

For outdoor  
blinds and awnings

For rolling shutters  
and rolling door

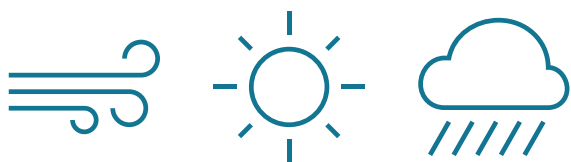
Adapters  
and supports

Installation  
guide

Nice

# Domì, Climatic Sensor

Bidirectional climatic sensors, available in three different models: wind-sun, wind-sun-rain and wireless wind-sun.



DOMIWSC

**Long working life**, thanks to the materials chosen to ensure excellent resistance to atmospheric agents

IP55

## Wide threshold adjustment

Wind threshold setting up to 120 km/h



DOMIWSR



DOMIWS

**Optimised sensitivity to vertical air currents**



DESIGNED FOR  
INSTALLERS



**MyNice Pro  
App**



Nice

# TTDW

Dimmer with bidirectional radio receiver for white LED strips, for a variety of installation situations



- BiDi
- 24 V DC
- Yubii \*
- 433 MHz

*\*coming soon*



The device is a **bidirectional dimmer and radio receiver rolled into one** and allows for the control of as many as 4 dimmable and white LED strips.

The light source(s) can then be turned on and off, as well as dimmed, with **any 433 MHz Nice radio control**.

A power supply unit and plug are required in addition to the **TTDW** (diagram p. 5).

**Up to 30 transmitters** can be taught in for each receiver.

The **TTDW** can be integrated very easily and quickly. Thus allowing for the integration of the light source into the overall ambience as desired.

The design of the receiver makes it suitable for a wide variety of installation situations. **The outputs may be controlled separately from one another.**

**The TTDW is programmed using the radio transmitter.**

Item no.	Description	Quantity
<b>TTDW</b>	Dimmer /radio receiver for white LED strips	1

### TECHNICAL DATA

Item no.	TTDW
Voltage input (V DC)	24
Voltage output (V DC)	24
Connected load (W)	minimum load 100 per channel, maximum load 240
Rated current light terminals (A)	max. 10
Ingress protection (IP)	55
Protection class	II
Transmitter power (dBm)	≤ 10
Radio frequency (MHz)	433
Radio range (m)	up to 90 outdoors (depending on terrain structure)
Ambient operating temperature (°C)	-20 to +45
Weight (Kg)	0.15
Dimensions L x W x H (mm)	98 x 26 x 20
Installation type	loose
Conformity	CE

### POWER CABLE

Cable length 1.5 m, 2-core



### DIMENSIONS



Nice

# TTD<sup>RGB</sup>

Dimmer with bidirectional radio receiver for RGB LED strips, for a wide variety of installation situations



- BiDi
- 24 V DC
- Yubii \*
- 433 MHz

*\*coming soon*



The device is a **bidirectional dimmer and radio receiver rolled into one** and allows for the control of as many as 4 LED strips as well as the adjustment of their brightness and light colour.

The light source(s) can then be turned on and off, as well as dimmed, with **any 433 MHz Nice radio control**.

A power supply unit and plug are required in addition to the **TTD<sup>RGB</sup>** (diagram p. 5).

**Up to 30 transmitters** can be taught in for each receiver.

The **TTD<sup>RGB</sup>** can be integrated very easily and quickly. Thus allowing for the integration of the light source into the overall ambience as desired.

The design of the receiver makes it suitable for a wide variety of installation situations. **Both outputs may be controlled separately from one another.**

**The TTD<sup>RGB</sup> is programmed using the radio transmitter.**

Item no.	Description	Quantity
<b>TTD<sup>RGB</sup></b>	Dimmer /radio receiver for RGB LED strips	1

TECHNICAL DATA

Item no.	TTD <sup>RGB</sup>
Voltage input (V DC)	24
Voltage output (V DC)	24
Connected load (W)	minimum load 100 per channel, maximum load 240
Rated current light terminals (A)	max. 10
Ingress protection (IP)	55
Protection class	II
Transmitter power (dBm)	≤ 10
Radio frequency (MHz)	433
Radio range (m)	up to 90 outdoors (depending on terrain structure)
Ambient operating temperature (°C)	-20 to +45
Weight (Kg)	0.15
Dimensions L x W x H (mm)	98 x 26 x 20
Installation type	loose
Conformity	CE

POWER CABLE

Cable length 1.5 m, 2-core



DIMENSIONS



Control systems

For indoor  
blinds

For outdoor  
blinds and awnings

For rolling shutters  
and rolling door

Adapters  
and supports

Installation  
guide



Nice

Yubii

Radio

TTBus

230 Vac

# Era Mat<sup>ST</sup>

With electronic limit switch, built-in receiver and Nice TTBus technology



**Tubular motor with electronic limit switch, built-in receiver and Nice TTBus technology.**

## S Size

Ø 35 mm

### Simple remote adjustment of the limit switch

by transmitter or with the O-View TT and TTPRO external programming units in automatic, semi-automatic or manual mode. Useful feedback through movement of the blind.

### Level programming: quick and safe.

Thanks to this function, there are a number of possible settings. If an incorrect selection is made, programming begins again from the previous level without the need to reprogramme all the settings programmed up to that point.

**Memory locking** to prevent accidental memorising.

**Adjustment of a number of intermediate opening positions.**

Thanks to Nice TTBus 3-wire technology, motor movement can be managed by means of a low-voltage control; simple and intuitive wired connection to climatic sensors without external control units and/or via radio.

**The built-in circuit board allows a number of motors to be connected and controlled in parallel** from a single point without the need for additional control units.

**The encoder technology** guarantees millimetric precision, reliability and maintenance of set values over time.

### Exclusive functions:

**FTC and FTA**, see page 309  
**FRT and RDC**, see page 309

**Time saving and simple electrical connections;** thanks to the double insulation, the motor does not need an earth wire.

Code	Description	Pcs./pack	Certificates
<b>E MAT ST 324</b>	Electronic limit switch, built-in receiver, TTBus. 3 Nm, 24 rpm	1	NF CE
<b>E MAT ST 524</b>	Electronic limit switch, built-in receiver, TTBus. 5 Nm, 24 rpm	1	NF CE
<b>E MAT ST 611</b>	Electronic limit switch, built-in receiver, TTBus. 6 Nm, 11 rpm	1	NF CE
<b>E MAT ST 1011</b>	Electronic limit switch, built-in receiver, TTBus. 10 Nm, 11 rpm	1	NF CE

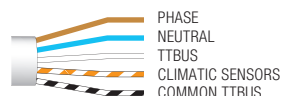
## TECHNICAL SPECIFICATION

Code	E MAT ST 324	E MAT ST 524	E MAT ST 611	E MAT ST 1011
ELECTRICAL SPECIFICATIONS				
Power supply (Vac/Hz)	230/50			
Current draw (A)	0,38	0,54	0,40	0,54
Power (W)	85	120	90	120
Power consumption in standby (W)	<0,5			
PERFORMANCE				
Torque (Nm)	3	5	6	10
Speed (rpm)	24		11	
Number of turns before the stop	>100			
Continuous operating time (min)	4			
DIMENSIONAL DATA				
Length (L) (mm)	496			
Weight of motor (kg)	1			
Pack dimensions (mm)	90x90x530			

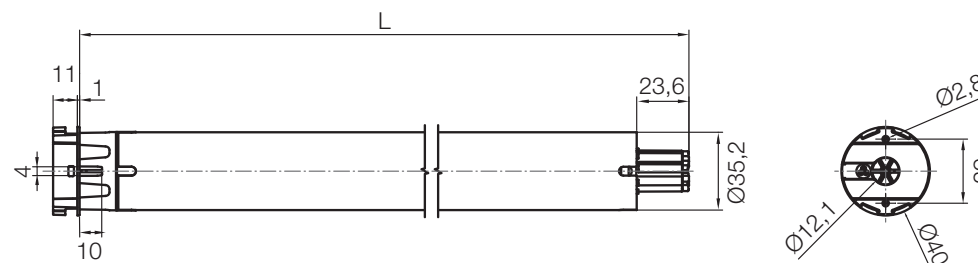
Protection class IP44.

## POWER CABLE

Cable length 2.5 m, 5 wires in cable



## DIMENSIONS



Control systems

For indoor  
blindsFor outdoor  
blinds and awningsFor rolling shutters  
and rolling doorAdapters  
and supportsInstallation  
guide



Nice

BiDi

Yubii

230 Vac

# Era Fit<sup>M</sup> BD

For outdoor blinds and rolling shutters,  
with built-in bidirectional radio receiver



**Tubular motor with electronic limit switch and built-in bidirectional radio receiver.**

**Size M**

Ø 45 mm

## Smart

The Nice bidirectional radio protocol enables confirmation of correct reception of the command by the automation and the possibility of checking the position of the blind or rolling shutter. As it also supports the Nice mesh network function, the motor can route the radio command, thus extending the radio range of the system.

**Handy remote control of limit switches** by transmitter in manual or semi-automatic mode.

**Easy to programme, thanks to feedback** from movement of the rolling shutter.

**Level programming: quick and safe.**

Thanks to this function, there are a number of possible settings.

If an incorrect selection is made, programming begins again from the previous level without the need to reprogramme all the settings programmed up to that point.

**Memory locking to prevent accidental memorising.**

**Connection to climatic sensors** via radio with user-friendly programming.

The built-in circuit board allows **a number of motors to be connected and controlled in parallel** from a single point without the need for additional control units.

**Low consumption in stand-by.**

Compatible with previous versions of Nice unidirectional transmitters.

Code	Description	Pcs./pack	Certificates
<b>E FIT M 817 BD</b>	Electronic limit switch, built-in bidirectional radio receiver. 8 Nm, 17 rpm, 15 kg*	1	NF CE
<b>E FIT M 1026 BD</b>	Electronic limit switch, built-in bidirectional radio receiver. 10 Nm, 26 rpm, 19 kg*	1	NF CE
<b>E FIT M 1517 BD</b>	Electronic limit switch, built-in bidirectional radio receiver. 15 Nm, 17 rpm, 28 kg*	1	NF CE
<b>E FIT M 3017 BD</b>	Electronic limit switch, built-in bidirectional radio receiver. 30 Nm, 17 rpm, 56 kg*	1	NF CE
<b>E FIT M 4012 BD</b>	Electronic limit switch, built-in bidirectional radio receiver. 40 Nm, 12 rpm, 75 kg*	1	NF CE
<b>E FIT M 5012 BD</b>	Electronic limit switch, built-in bidirectional radio receiver. 50 Nm, 12 rpm, 95 kg*	1	NF CE

\*Lifted weight, value calculated with 60 mm diameter octagonal roller

Products also available in multiple packs. For more information, contact your local dealer.

## TECHNICAL SPECIFICATION

Code	E FIT M 817 BD	E FIT M 11026 BD	E FIT M 1517 BD	E FIT M 3017 BD	E FIT M 4012 BD	E FIT M 5012 BD
ELECTRICAL SPECIFICATIONS						
Power supply (VAC/Hz)	230/50					
Absorption (A)	0,55	0,65	0,75	1,10		
Power (W)	120	150	170	250	245	250
POWER CONSUMPTION IN STANDBY (W)	<0,5					
PERFORMANCE						
Torque (Nm)	8	10	15	30	40	50
Speed (rpm)	17	26	17		12	
Lifted weight* (kg)	15	19	28	56	75	95
Number of turns before the stop	92	27	92			
Continuous operating time (min)	4					
DIMENSIONAL DATA						
Length (L) (mm)	426	451		486		
Weight of motor (kg)	2,15	1,95	2,45	2,65		
Pack dimensions (mm)	90x90x465		90x90x500		90x90x530	

**Protection class IP44.**

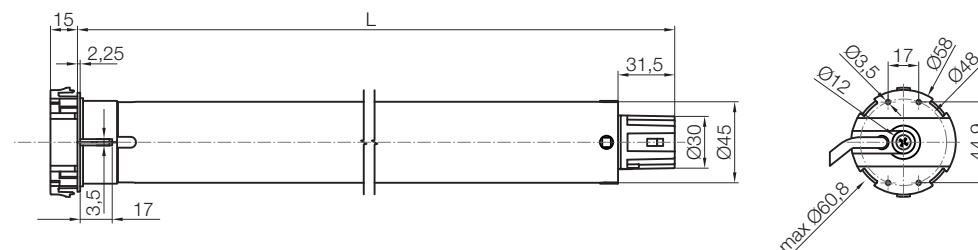
\*Value calculated with 60 mm diameter octagonal roller.

## POWER CABLE

**Length 2.5 m, 3 wires in cable**



## DIMENSIONS

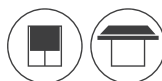


Nice

BiDi

Yubii

230 Vac



# Era Fit<sup>L</sup> BD

For outdoor blinds and rolling shutters,  
with built-in bidirectional radio receiver



**Tubular motor with electronic limit switch and built-in bidirectional radio receiver.**

**Size L**

Ø 58 mm

## Smart

The Nice bidirectional radio protocol enables confirmation of correct reception of the command by the automation and the possibility of checking the position of the blind or rolling shutter. As it also supports the Nice mesh network function, the motor can route the radio command, thus extending the radio range of the system.

**Handy remote control of limit switches** by transmitter in manual or semi-automatic mode.

**Easy to programme, thanks to feedback** from movement of the rolling shutter.

## Level programming: quick and safe.

Thanks to this function, there are a number of possible settings.

If an incorrect selection is made, programming begins again from the previous level without the need to reprogramme all the settings programmed up to that point.

## Memory locking to prevent accidental memorising.

**Connection to climatic sensors** via radio with user-friendly programming.

The built-in circuit board allows **a number of motors to be connected and controlled in parallel** from a single point without the need for additional control units.

## Low consumption in stand-by.

Compatible with previous versions of Nice unidirectional transmitters.

Code	Description	Pcs./pack	Certificates
<b>E FIT L 5517 BD</b>	Electronic limit switch, built-in bidirectional radio receiver. 55 Nm, 17 rpm, 85 kg*	1	CE
<b>E FIT L 6517 BD</b>	Electronic limit switch, built-in bidirectional radio receiver. 65 Nm, 17 rpm, 100 kg*	1	CE
<b>E FIT L 7517 BD</b>	Electronic limit switch, built-in bidirectional radio receiver. 75 Nm, 17 rpm, 115 kg*	1	CE
<b>E FIT L 8012 BD</b>	Electronic limit switch, built-in bidirectional radio receiver. 80 Nm, 12 rpm, 120 kg*	1	CE
<b>E FIT L 10012 BD</b>	Electronic limit switch, built-in bidirectional radio receiver. 100 Nm, 12 rpm, 150 kg*	1	CE
<b>E FIT L 12012 BD</b>	Electronic limit switch, built-in bidirectional radio receiver. 120 Nm, 12 rpm, 180 kg*	1	CE

\*Lifted weight, value calculated with 70 mm diameter octagonal roller

## TECHNICAL SPECIFICATION

Code	E FIT L 5517 BD	E FIT L 6517 BD	E FIT L 7517 BD	E FIT L 8012 BD	E FIT L 10012 BD	E FIT L 12012 BD
<b>ELECTRICAL SPECIFICATIONS</b>						
Power supply (Vac/Hz)	230/50					
Absorption (A)	1,65	1,80	2,00	1,65	1,75	2,10
Power (W)	360	420		360	390	465
Power consumption in standby (W)	< 0,5					
<b>PERFORMANCE</b>						
Torque (Nm)	55	65	75	80	100	120
Speed (rpm)	17			12		
Lifted weight* (kg)	85	100	115	120	150	180
Number of turns before the stop	> 100					
Continuous operating time (min)	4					
<b>DIMENSIONAL DATA</b>						
Length (L) (mm)	672					
Weight of motor (kg)	5,150					
Pack dimensions (mm)	100x100x750					

Protection class IP44.

\*Value calculated with 70 mm diameter octagonal roller.

## POWER CABLE

Length 2.5 m, 3 wires in cable



## DIMENSIONS

